

Ref#: CG100605

Price: 179.000 €

Contact: +34 622 33 55 82 (+Whatsapp)

Location: San Pedro del Pinatar, Murcia

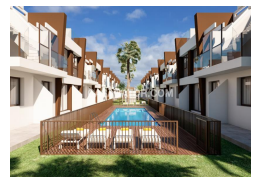
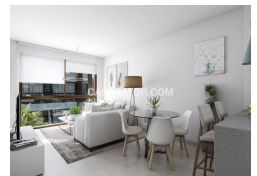
Bedrooms: 2

Bathrooms: 2

Build Size: 66m2



Apartment, San Pedro del Pinatar



Apartment with 2 bedrooms and 2 bathrooms in San Pedro Del Pinatar, Murcia.

New Build Stunning contemporary design 2 bed 2 bath apartments located in Res. Belich II, San Pedro del Pinatar, Murcia.

These modern style apartments very briefly consist of the following :-

Lounge / diner, open plan kitchen, 2 x double bedrooms, 2 x bathrooms, terrace/balcony, private rooftop solarium/garden with off road parking, comunal swimming pool, top quality fixtures & fittings throughout & much more.

64-66m2 build size, 52m2 solarium & 21m2 garden.

These lovely properties are located just a short walk from all local amenities & the beach.

Bedrooms: 2

Bathrooms: 2

Build Size: 66 m2

Garden

Balcony